

THE FLORIDA ARTIST GROUP

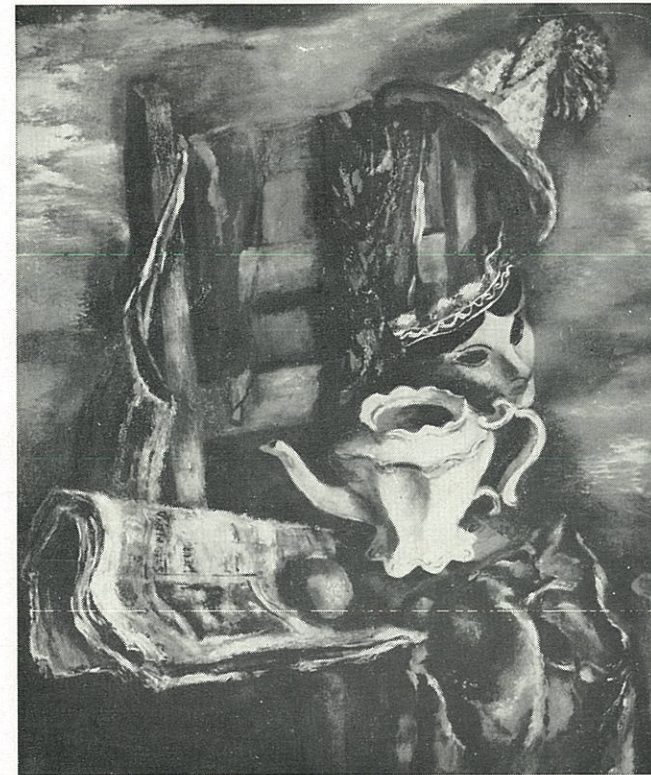
Artist Members:

Edward A. Anderson
Elsa Martin Anshutz
Emilie Arlt
Ris Armstrong
Albert E. Backus
Paul Bartlett
William H. Boughton
Robert E. Carson
Robert Chase
Shirley Clement
M. S. Clinedinst
Donald Coale
Alida Conover
Dixie Cooley
Arthur Covey
Harrison W. Covington
E. Fairfax Davenport
Sallie Boyd Dillard
Mark Dixon Dodd
James Wyman Eaton
Don Emery, Sr.
Truman Fassett
Elsie Freund
Louis Freund
Jeannette M. Genius
Stanley Goddard
Minerva Walker Goldsmith
Channing Hare
Faye M. Henthorne
Harry Hershey
George Snow Hill
Polly Knipp Hill
Hollis H. Holbrook
Vivian Nicholas Holbrook
Roger C. Holt
Victoria Hutson Huntley
George R. Kaiser, Jr.
Florence Kawa
John M. Klinkenberg
Edith Wychoff Kuchler
Dorothy Sherman Leech
Hilton Leech

Laura E. Lock
Grace Carlsruh Mack
Fletcher Martin
Dorothy McCoy
Lawrence R. McCoy
P. R. McIntosh
Hugh F. McKean
R. H. McKelvey
Keith McPheeters
Richard L. Merrick
Katharine Merrill
Jack Newberry
Rosamond S. Newberry
Lois Niemeier
J. L. Olson
Helen Ord
Tibor G. Pataky
Lee Ramsdell
Joel W. Reichard
H. Bernard Robinson
Elden Rowland
Andrew D. Sanders
Helen Sawyer
Wells M. Sawyer
Gertrude Schweitzer
Harold B. Slingerland
Syd Solomon
Robert B. Sprague
Dudley R. Stokes
Larry Stults
Marion Terry
Chester J. Tingler
Bartlett Tracy
Eleanor Treacy
Barbara Warren
Reynold Weidenaar
Kate F. Wheelan
Loran F. Wilford
James Mallory Willson
Willis F. Woods
Jane Ziegler

ELDEN ROWLAND: Official Copy

SECOND ANNUAL EXHIBITION OF THE FLORIDA ARTIST GROUP ON NATIONAL CIRCUIT MAY, 1951 - APRIL, 1952



CLOWN STILL LIFE

Helen Sawyer, N.A.

(oil)

First shown under the auspices of the Department of Art of the
UNIVERSITY OF FLORIDA
Gainesville, Florida
and circuited by the Florida Artist Group, Inc. from its Secretarial
Headquarters, 201 Pierce St., Clearwater, Florida

Foreword

The Second Annual Exhibition of the Florida Artist Group was presented at Gainesville, Florida, under the sponsorship of the University of Florida, and under the immediate direction of the Department of Art of the College of Architecture and Allied Arts, with the General Extension Division of Florida cooperating. The exhibition opened with a two-day All Florida Art Conference on April 27-28, in which faculty members and invited speakers participated. From the works entered by sixty-eight Exhibiting Members of the Florida Artist Group, twenty-four were selected for circuit by Bartlett Hayes, Jr., acting as sole juror. Mr. Hayes, Director of the Addison Gallery of American Art, Phillips Academy, Andover, Massachusetts, was invited by the University to come to Gainesville as the principal speaker at the conference and as juror.

The Hayes selections are now presented as evidence of a progressive spirit in Florida art.



Circuit Opening

Honored with an invitation given a year in advance the circuited exhibition has its initial showing at the Smithsonian Institution, Washington, D. C., under the direction of Mr. Thomas M. Beggs, Director of the National Collection of Fine Arts. The exhibition opens with a Special View for invited guests on June 7th, 2:30 to 4 p.m. in the Foyer of the Natural History Building, Constitution Avenue at 10th Street.

The FLORIDA ARTIST GROUP

—Organization and Personnel

EXECUTIVE COMMITTEE of the FLORIDA ARTIST GROUP, INC.

President—HOLLIS H. HOLBROOK, *Head Professor, Department of Art, University of Florida, Gainesville.*

HILTON LEECH, *Director, Amagansett School of Art, Sarasota, Florida.*

HUGH F. McKEAN, *Director, the Morse Gallery of Art, Rollins College, Winter Park.*

WILLIS F. WOODS, *Director, Norton Gallery and School of Art, West Palm Beach.*

Sec'y-Treas. and Director—RALPH H. McKELVEY, *President, Clearwater Art Group. (Director's office where inquiries may be addressed, 201 Pierce St., Clearwater, Florida)*



Sustaining and Patron Members:

Robert S. Cain

Mrs. C. Ed. Carmichael

Charles Hull Ewing

Truman Fassett

Dr. Morris S. Lazaron

Hugh F. McKean

Mrs. Helen Stagg McKim

Wells M. Sawyer

George A. Zabriskie

The FLORIDA ARTIST GROUP

—its significance as a factor in the art activity of Florida

"To stimulate the development of high standards of creative art in the State of Florida" is the purpose of the organization as stated in the charter by which on June 30th, 1949, the Florida Artist Group was established as a non-profit, educational corporation.

For several post-war years widely known artists of the State, and leaders in the field of art education, had recognized that much could be done to arouse the interest of the Florida public in good art, and to carry to the public at large knowledge of Florida's contribution to the development of contemporary art in America. It was felt that progress along these lines could be attained through the medium of an organized Group limited in membership to painters, sculptors and print-makers who had gained recognition in state, regional or national exhibitions.

With these ends in view heads of university and college art departments, art museums and art schools, formed the Florida Artist Group. Offer of Exhibiting Membership to qualified artists of the State brought a spontaneous response. Of approximately one hundred artists deemed by the Executive Committee to have the requisite qualifications, eighty-six are enrolled as Exhibiting Members. Of these sixty-eight participated in the Second Annual Exhibition, from which the twenty-four works now sent on circuit are drawn.

It is a notable fact that, in recognition of the significance of the new organization, sponsorship of its First and Second Annuals has been given by the University of Florida, Gainesville, the openings honored with two-day All Florida Art Conferences held in late April of 1950 and 1951.

Participating in the Conferences were Dr. J. Hillis Miller, President of the University; William T. Arnett, Dean of the College of Architecture and Allied Arts; B. C. Riley, Dean of the General Extension Division of Florida; Robert Davidson, Head Professor of Humanities; Hollis H. Holbrook, Head Professor of Art; P. R. McIntosh, Associate Professor of Art; Fletcher Martin, Visiting Professor in Art; others of the art faculty, and all members of the Executive Committee of the Florida Artist Group.

At the Second Annual Conference the principal speaker was Mr. Bartlett Hayes, Jr., Director, Addison Gallery of American Art, subject of his address "Wage before Beauty?"

A full morning was devoted to a panel discussion on the subject "The Creative Artist of today is said to be displaced from his community. What can he do about it?" 500 word papers by each of the members of the panel were published and distributed in advance.

Panel Members:

Willis Woods, Director, Norton Gallery and School of Art, West Palm Beach—presiding.

Dr. John Richard Craft, Director, Columbia Museum of Art, South Carolina.

Victoria Hutson Huntley, Artist, Winter Park.

Hugh F. McKean, Director, the Morse Gallery of Art, Rollins College, Winter Park.

Ralph H. McKelvey, President, Clearwater Art Group, Clearwater.

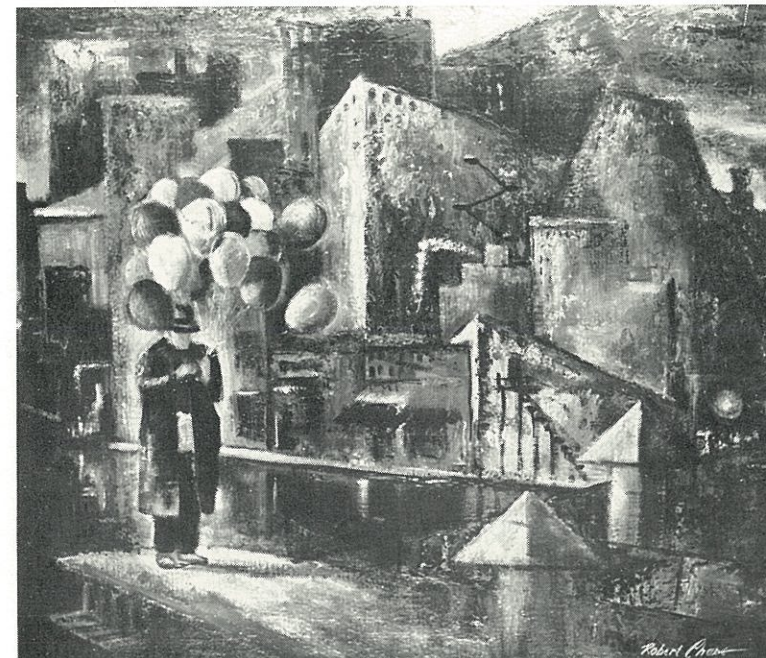
Syd Solomon, Artist, Sarasota.

Robert B. Sprague, Artist, St. Petersburg.

CATALOGUE

Second Annual Circuited Exhibition of the FLORIDA ARTIST GROUP

| Artist | Title | Medium | Price |
|-------------------------------------------------------------------------------------|-------------------|------------|---------|
| 1. Robert Chase Purchase Award, Florida Union of the University of Florida | <i>The Vendor</i> | oil | \$100 |
| 2. Shirley Clement | <i>Deadline</i> | watercolor | 150 |
| 3. Harrison W. Covington | <i>Still Life</i> | oil | inquire |
| 4. George S. Hill | <i>Study</i> | oil | 100 |



THE VENDOR

Robert Chase

(oil)



STILL LIFE

Harrison W. Covington

(oil)

Artist

Title

Medium

Price

- | | | | |
|-------------------------|---------------------------|-------------|-------|
| 21. Lois Bartlett Tracy | <i>Power Enigma</i> | ink-tempera | \$250 |
| 22. Barbara Warren | <i>Grief</i> | oil | 125 |
| 23. Loran Wilford | <i>Madonna of the Fog</i> | watercolor | 150 |
| 24. Willis F. Woods | <i>Bird</i> | egg tempera | 100 |

| Artist | Title | Medium | Price |
|---------------------------------------------------------------------------------------|--------------------------|--------------------|--------------|
| 5. Polly Knipp Hill Purchase Award, J. Gibbes Chesnut | <i>Music Camp</i> | roulette- print | \$ 15 |
| 6. Vivian Nicholas Holbrook | <i>Boys and Kites</i> | oil | 150 |
| 7. Victoria Hutson Huntley | <i>Florida Farm</i> | oil and tempera | 400 |
| 8. Florence Kawa Gainesville Chamber of Commerce Award, Gainesville, Florida | <i>The Flower Garden</i> | oil | 200 |



BIRD

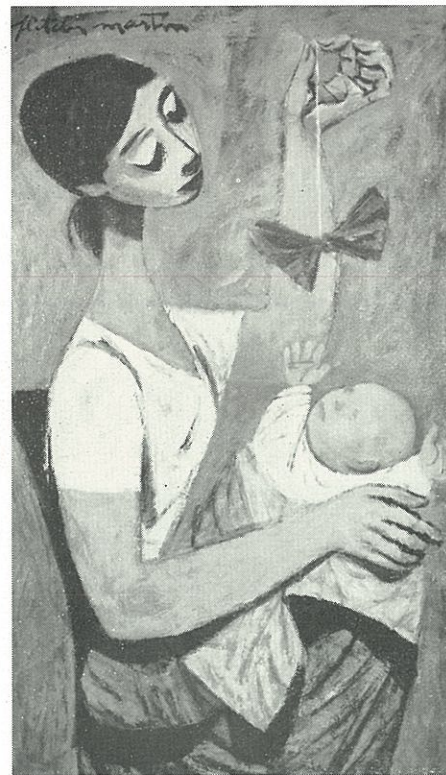
Willis F. Woods

(egg tempera)

| Artist | Title | Medium | Price |
|-----------------------|------------------------------------|------------|-------|
| 18. Syd Solomon | <i>French Quarter Market</i> | gouache | \$200 |
| 19. Robert B. Sprague | <i>Midway Star</i> | oil | 100 |
| 20. Dudley Stokes | <i>Resurrection of St. Vincent</i> | watercolor | 350 |

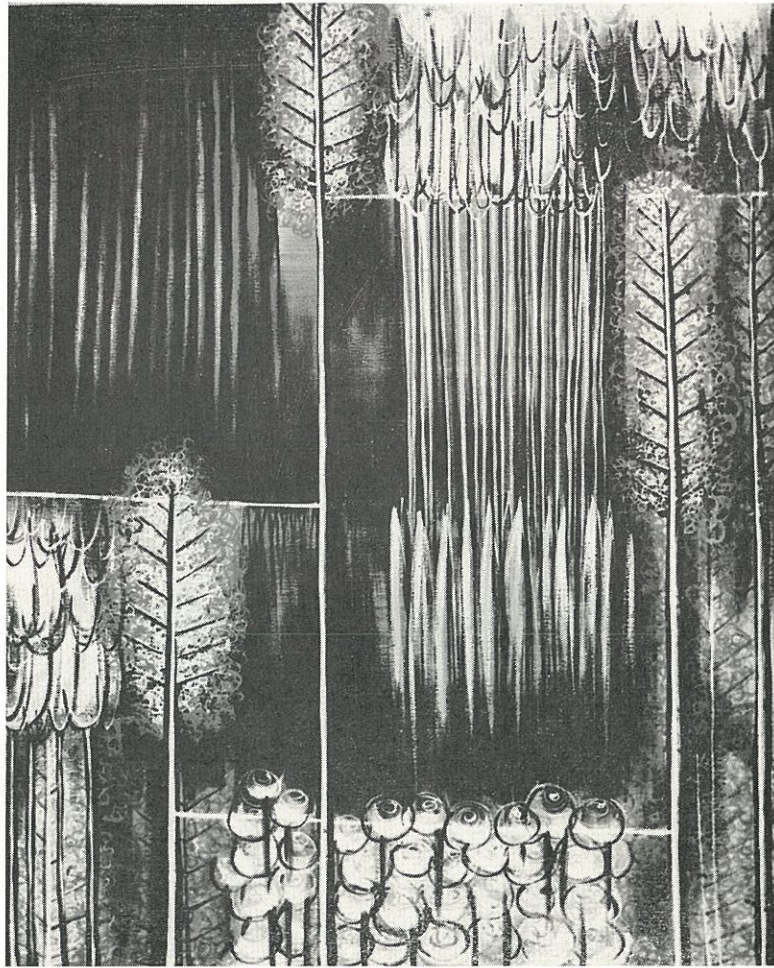


RESURRECTION OF ST. VINCENT (watercolor)
Dudley Stokes

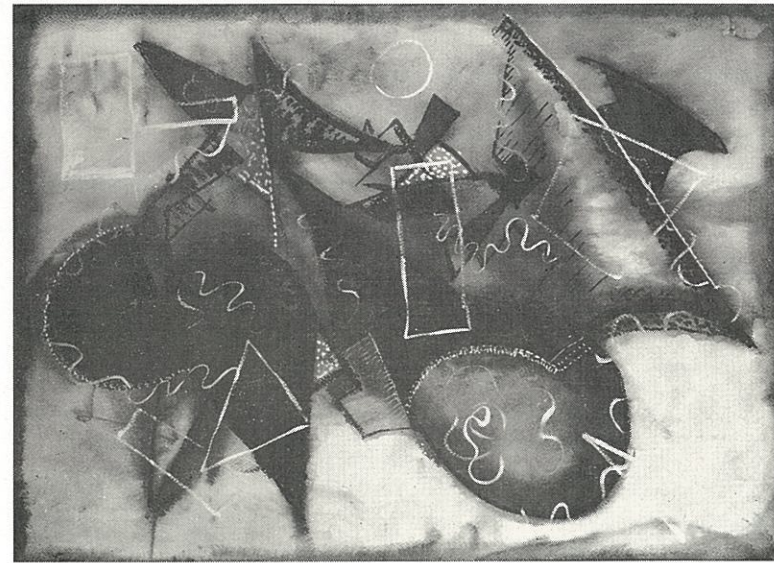


THE WONDROUS OBJECT (oil)
Fletcher Martin

| Artist | Title | Medium | Price |
|---------------------|-----------------------------------|--------|-------|
| 9. Hilton Leech | <i>Glass Minnows</i> | casein | \$200 |
| 10. Fletcher Martin | <i>The Wondrous Object</i> | oil | 750 |
| 11. Hugh F. McKean | <i>Another Part of the Forest</i> | oil | 300 |



THE FLOWER GARDEN (oil)
Florence Kawa



POWER ENIGMA (ink-tempera)
Lois Bartlett Tracy

| Artist | Title | Medium | Price |
|----------------------|---------------------------|------------|-------|
| 12. Keith McPheeters | <i>Sea and Sand Dunes</i> | watercolor | \$ 75 |
| 13. Joel W. Reichard | <i>Warning at Nausset</i> | oil | 250 |
| 14. Elden Rowland | <i>Lonely Bridge</i> | oil | 75 |

| Artist | Title | Medium | Price |
|-------------------------|-------------------------|------------|-------|
| 15. Andrew Sanders | <i>Aerial Fantasy</i> | oil | \$500 |
| 16. Helen Sawyer, N.A. | <i>Clown Still Life</i> | oil | 500 |
| 17. Gertrude Schweitzer | <i>Summer Day</i> | watercolor | 400 |